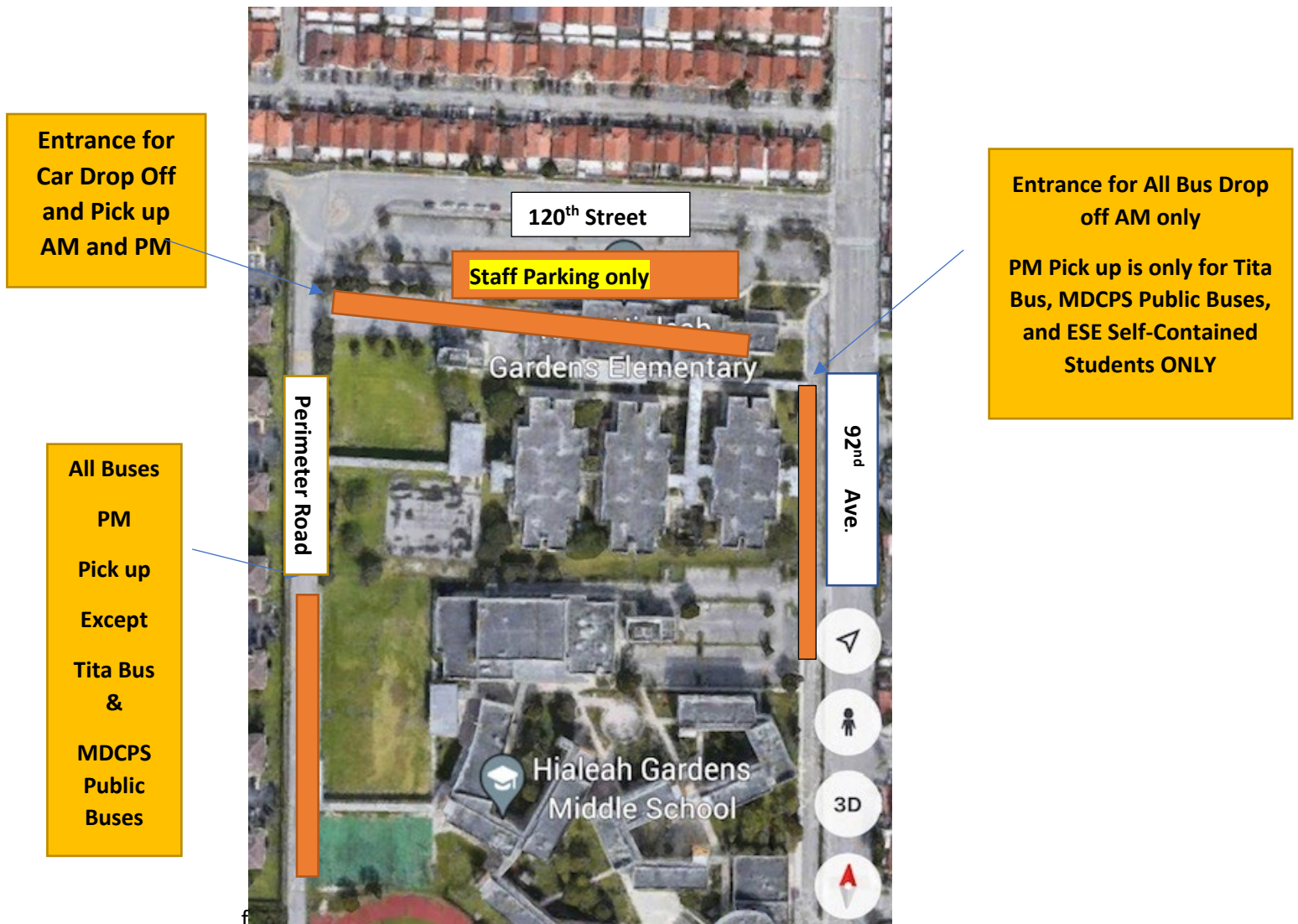


# WHGE ARRIVAL & DISMISSAL AREAS 2022-2023



1. **Gates** will open at **7:30 am** on both the Car Drop-off and Bus Drop-off area shown above. No students are to be dropped off before 7:30 am unless you have registered for Morning Care. Please come by the school before school starts to register for this.
2. The **Staff Parking** lot is **only** for staff members. Please do not drop off students in that area. You will need to either drop off at the front of the school by car or walking in. You may not park inside the school since we do not have guest parking. Parking is available on NW 120 Street.
3. Bus drop-off will only be allowed by the entrance shown above on 92<sup>nd</sup> Ave. Please do not drive in that area with your car. That is only for buses.
4. Pick-up for students will be at **1:50 pm for K-1<sup>st</sup>** and **3:05 pm for 2<sup>nd</sup>-5<sup>th</sup>**
5. Please contact the school if you need further assistance 305-818-4000.

**THANK YOU**